



SPP 2361
On the Way to the
Fluvial Anthroposphere



SPP 2361

Kick-off-meeting of the DFG Priority Programme 2361 “On the Way to the Fluvial Anthroposphere” (Leipzig Lab, Leipzig University, 9th to 10th March 2023)

The [DFG Priority Programme 2361 “On the Way to the Fluvial Anthroposphere”](#) is based on the key hypothesis of a pre-modern emergence of a Fluvial Anthroposphere. All sub-projects of the Priority Programme investigate medieval and pre-industrial floodplains and fluvial societies in the Rhine, Danube and Elbe river systems and asks when and why humans became a significant controlling factor in floodplain formation. The Priority Programme is committed to multidisciplinary approaches from history, archaeology, and geosciences.



Fig. 1. Kick-off meeting of the principal investigators of the DFG Priority Programme 2361 “On the Way to the Fluvial Anthroposphere” at Leipzig University on the 9th to 10th of March 2023 (© Physical Geography working group, Leipzig University).

During the kick-off-meeting the principal investigators and the committee of the Priority Programme 2361 have presented the aims and perspectives of the individual sub-projects and have developed guiding strategies for cross-project cooperation. The coordinator (Christoph Zielhofer) and the committee (Natascha Mehler, Gerrit Jasper Schenk, Lukas Werther) have invited all principal investigators to the premises of the [Leipzig Lab](#) at Leipzig University for initial discussions and coordination.

The following sub-projects and principal investigators are part of the first three-year funding phase of the Priority Programme 2361 from 2023 to 2026.

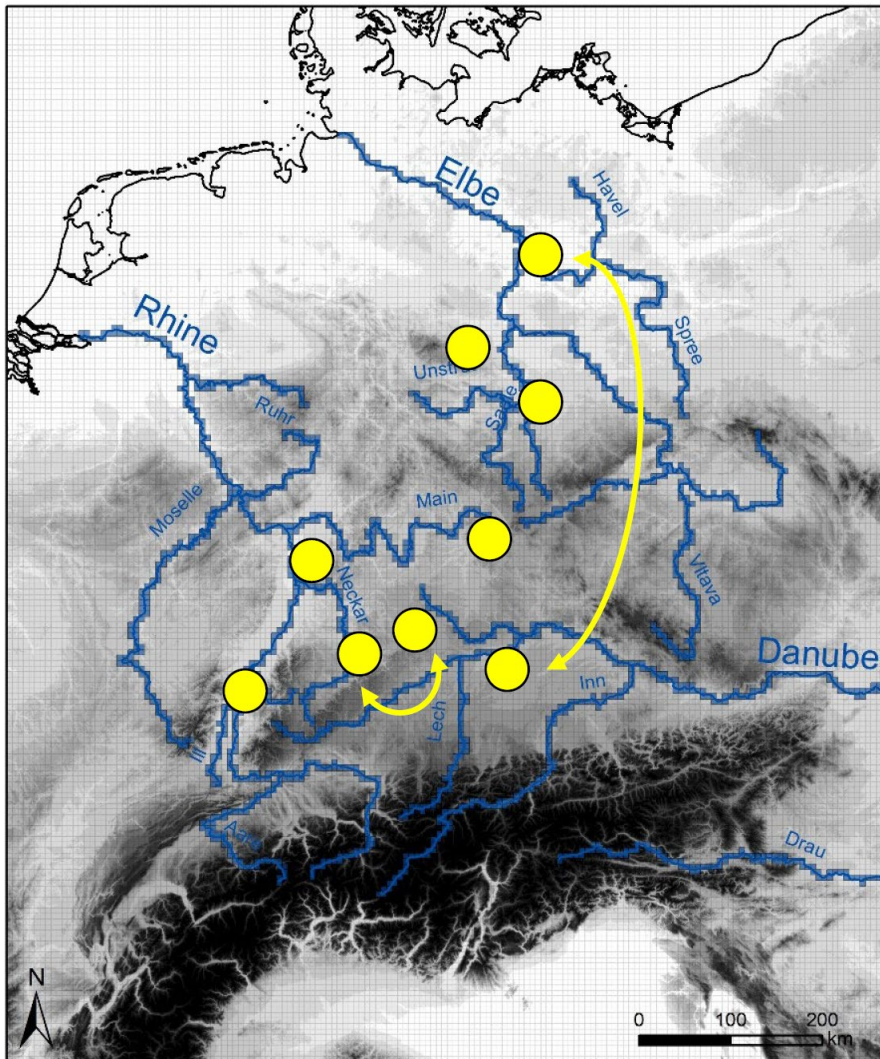


Fig. 2. Subprojects of the DFG Priority Programme 2361 (1st funding phase 2023 to 2026)

The Lower Havel River and Greater Donaumoos Regions: ‘Failed’ or ‘successful’ reclamation of floodplains and peatlands? – A comparative analysis

Anja Linstädter (Potsdam), Natascha Mehler (Tübingen), Ulrike Werban (Leipzig) and Christoph Zielhofer (Leipzig)

Headway or Escape? The Anthropogenic Riverscape Transition (HEARTs) – How did medieval settlement structures interact with landscape evolution in the Eastern Harz Mountains and its forelands?

Susanne Friederich (Halle), Frank Lehmkuhl (Aachen) and Philipp Schulte (Aachen)

Leipzig, city in a state of flux - Urban-fluvial symbiosis in a long-term perspective

Matthias Hardt (Leipzig), Johannes Schmidt (Leipzig) and Julia Schmidt-Funke (Leipzig)

The River Weschnitz Fluvioscape and its Interaction with the Lorsch Abbey

Thomas Becker (Darmstadt), Olaf Bubbenzer (Heidelberg), Bertil Mächtle (Heidelberg), Udo Recker (Wiesbaden), Gerrit Jasper Schenk (Darmstadt) and Andreas Vött (Mainz)

Evolution of a human-dominated floodplain system: The Wiesent River System in the Northern Franconian Alb (Main catchment) in Early Middle Ages to Early Modern times

Andreas Dix (Bamberg), Markus Fuchs (Gießen) and Rainer Schreg (Bamberg)

Local pathways to the Fluvial Anthroposphere at Echaz (Rhine) and Eger (Danube). A comparative analysis from c. AD 1100 to 1800

Peter Frenzel (Jena), Sigrid Hirbodian (Tübingen), Peter Kühn (Tübingen), Gerrit Jasper Schenk (Darmstadt), Ulrike Werban (Leipzig), Lukas Werther (Tübingen) and Christoph Zielhofer (Leipzig)

Deciphering the fluvio-social metabolism of the Upper Rhine area (DEMUR) - Factors and actors in the transformation towards a fluvial anthroposphere prior to the industrial period

Jan Blöthe (Freiburg), Rüdiger Glaser (Freiburg), Frank Preusser (Freiburg) and Gerrit Jasper Schenk (Darmstadt)

Coordination Funds

Coordinator: Christoph Zielhofer (Leipzig)

Committee: Natascha Mehler (Tübingen), Gerrit Jasper Schenk (Darmstadt) and Lukas Werther (Tübingen)

We look forward to seeing all principal investigators, project members, co-applicants and cooperation partners at the **first annual plenary meeting** that will take place at Leipzig University on the **17th to 19th of January 2024**.

Leipzig, 10th March 2023

Christoph Zielhofer, Natascha Mehler, Gerrit Jasper Schenk and Lukas Werther